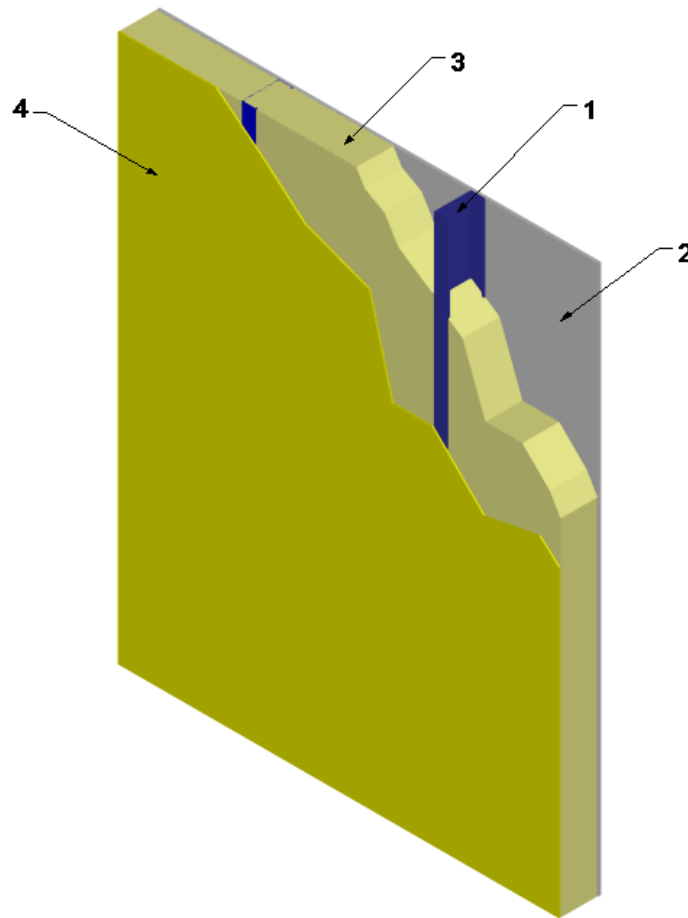


---

General Coatings Manufacturing Corp. and Universal Polymers Corporation  
Design No. GCM/FI 30-01  
Spray Polyurethane Foam Insulation  
Ultra-Thane 050, Ultra-Thane 050 MAX, UPC 400, UPC 500, and UPC 500 MAX  
NFPA 285  
Rating: Meets Conditions of Acceptance

---



1. **WALL FRAMING:** Install min. 3-5/8 in. deep, max. 6 in. deep, 20 GA galvanized steel studs spaced max. 24 in. on-center (oc). Secure steel studs to min. 3-5/8 in. 20 GA top and bottom track (not shown) using #8, 7/16 in. long, self-tapping, pan-head framing screws.
2. **GYPSUM BOARD:** Install 5/8 in. thick Type X gypsum board with long dimension perpendicular to studs.

Attach to steel studs using #6, Type S, 1-1/4 in. long, self-tapping, bugle-head screws. Space fasteners 8 in. oc around perimeter and 12 in. oc in the field.

- A. **JOINT TAPE AND COMPOUND (Not Shown)** – Apply a level 2 finish of vinyl or casein, dry or premixed, joint compound applied to the following elements: Apply to face layer of gypsum board in two coats to all exposed fastener heads and gypsum board joints.



## Division 07 – Thermal and Moisture Protection

### 07 21 00 Thermal Insulation

#### 07 21 19 Foamed-In-Place Insulation

Embed min. 2 in. wide paper, plastic, or fiberglass tape in first layer of compound over joints in gypsum board.

- 3. CAVITY INSULATION:** Spray-apply one of the following insulations at its nominal density to completely or partially fill the steel stud cavity, leaving a max. 2 in. air gap.

**CERTIFIED PRODUCTS:** Ultra-Thane 050 (nominal density 0.52 pcf), Ultra-Thane 050 MAX (nominal density 0.45 pcf), UPC 400 (nominal density 0.44 pcf), UPC 500 (nominal density 0.52 pcf), or UPC 500 MAX (nominal density 0.45 pcf).

- 4. EXTERIOR SHEATHING:** Install 5/8 in. thick, Type X exterior gypsum sheathing to the exterior side of studs. Install sheathing with long dimension perpendicular to studs. Attach to steel studs using #6, Type S, 1-1/4 in. long, self-tapping, bugle-head screws.

Space fasteners 8 in. oc around perimeter and 12 in. oc in the field.

- 5. OPENINGS (Not Shown):** Openings must be protected with 20 GA steel framing.

- 6. FLOORLINE FIRESTOPPING (Not Shown):** Install 4 in. thick, 4.0 pcf mineral wool in the stud cavity at the floorlines.

- 7. EXTERIOR WALL COVERINGS (Not Shown):** Details of exterior wall coverings and fenestration details must be provided to the building official, along with an engineering analysis demonstrating that the addition of the wall covering and fenestration details will not negatively impact conformance of the assembly with the requirements of IBC Section 2603.5.

*Consult the listing report on the Directory of Building Products (<https://bpdirectory.intertek.com>) for the edition of the standard(s) evaluated.*

*Compliance of the assembly described in this Design Listing with the referenced standard relies on verification that the assembly constructed in the field is consistent with that described herein. Intertek certified products may be verified by the approved Intertek label; other products must be verified by the Authority Having Jurisdiction as meeting the specifications stated herein.*